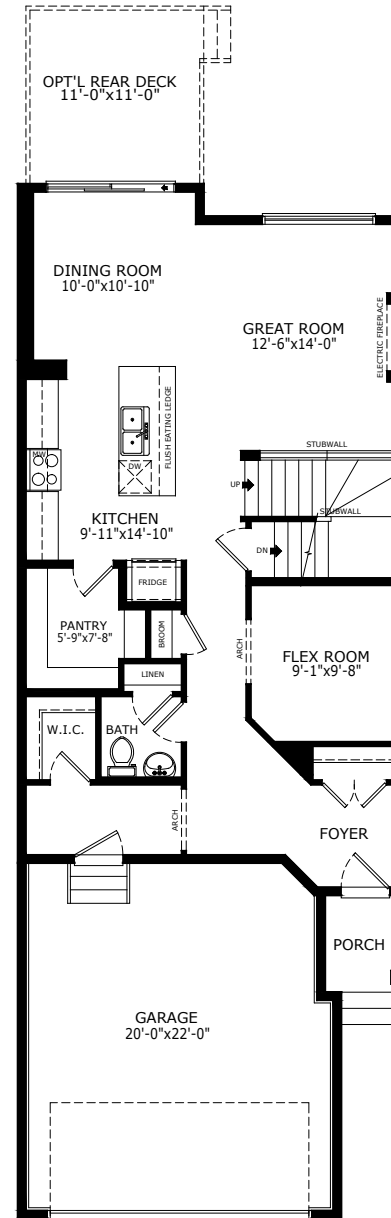
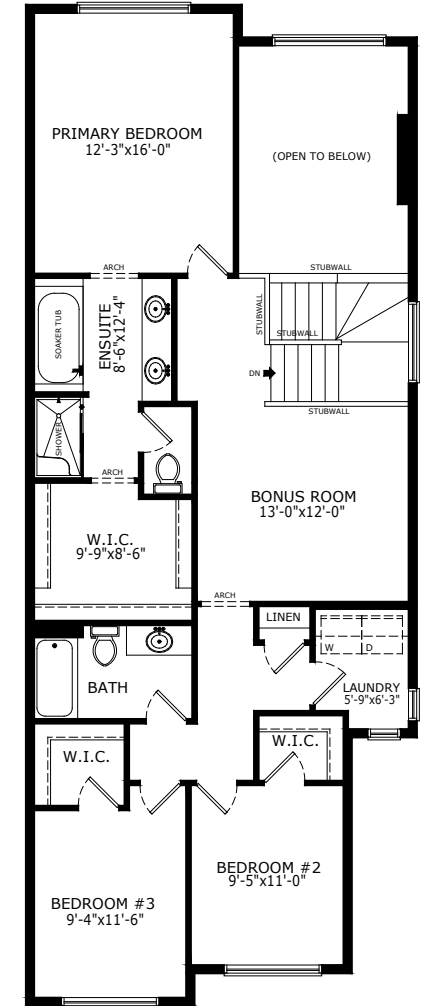


2153 SQ FT
3 BED
2.5 BATHS

BENNETT



MAIN: 997 SQ FT



UPPER: 1156 SQ FT

Sterling HOMES

A QUALICO Company

ELEVATIONS



COLONIAL



CONTEMPORARY



CRAFTSMAN



FARMHOUSE



MID-CENTURY
MODERN



MODERN
TUDOR



MOUNTAIN



PRAIRIE



URBAN
CRAFTSMAN



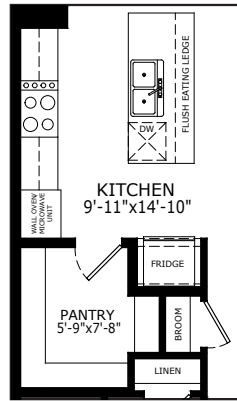
URBAN
PRAIRIE



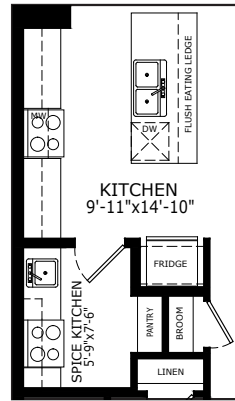
Scan here
for floorplan
options and
more

MAIN FLOOR OPTIONS

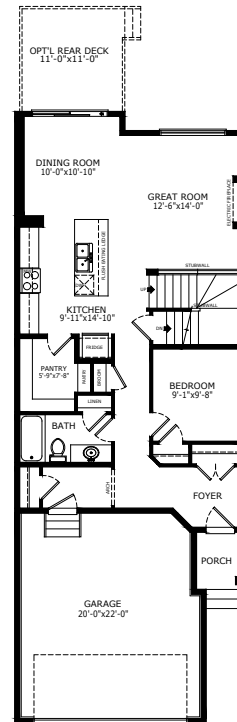
OPTIONAL
EXECUTIVE KITCHEN



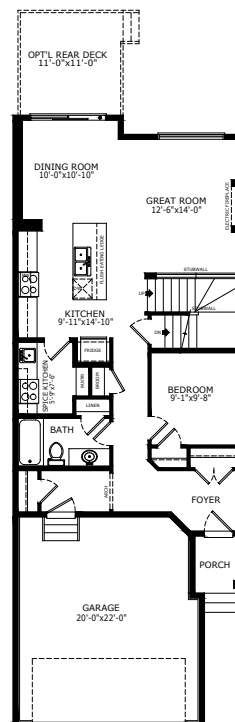
OPTIONAL
SPICE KITCHEN



OPTIONAL FULL BATH
WITH BEDROOM

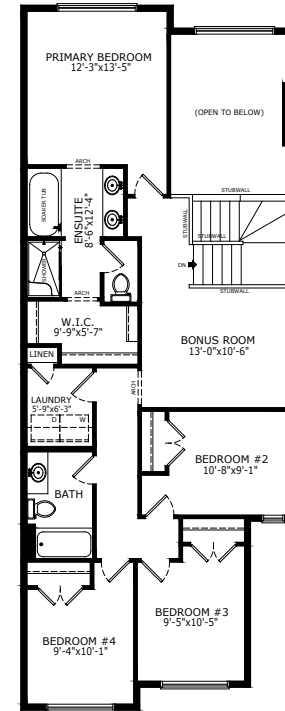


OPTIONAL SPICE KITCHEN &
FULL BATH WITH BEDROOM



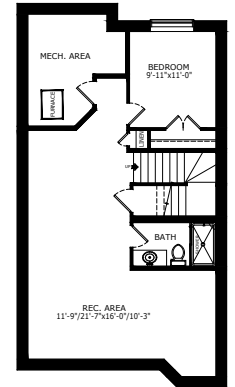
UPPER FLOOR OPTION

OPTIONAL 4 BEDROOMS

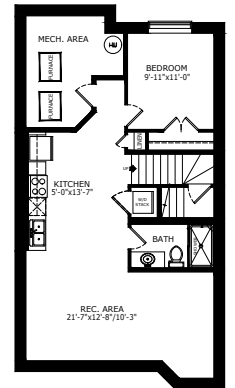


BASEMENT OPTIONS

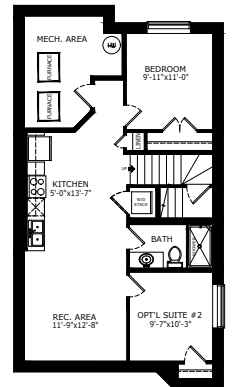
STANDARD 706 SQ FT



1 BEDROOM 'LEGAL SUITE' 719 SQ FT



2 BEDROOM 'LEGAL SUITE' 719 SQ FT



*Legal Suite availability varies by community and municipal regulations.

Build Your Life

STERLINGCALGARY.COM